

**MUT Antibody (Center)**  
**Purified Rabbit Polyclonal Antibody (Pab)**  
**Catalog # AP22355c****Specification**

---

**MUT Antibody (Center) - Product Information**

Application	WB, IF, E
Primary Accession	<a href="#">P22033</a>
Other Accession	<a href="#">Q5RFN2</a>
Reactivity	Human, Mouse
Predicted	Human
Host	Rabbit
Clonality	polyclonal
Isotype	Rabbit IgG
Calculated MW	83134

**MUT Antibody (Center) - Additional Information****Gene ID** 4594**Other Names**

Methylmalonyl-CoA mutase, mitochondrial, MCM, 5.4.99.2, Methylmalonyl-CoA isomerase, MUT

**Target/Specificity**

This MUT antibody is generated from a rabbit immunized with a KLH conjugated synthetic peptide between 492-526 amino acids from the Central region of human MUT.

**Dilution**

WB~~1:2000

IF~~1:25

E~~Use at an assay dependent concentration.

**Format**

Purified polyclonal antibody supplied in PBS with 0.09% (W/V) sodium azide. This antibody is purified through a protein A column, followed by peptide affinity purification.

**Storage**

Maintain refrigerated at 2-8°C for up to 2 weeks. For long term storage store at -20°C in small aliquots to prevent freeze-thaw cycles.

**Precautions**

MUT Antibody (Center) is for research use only and not for use in diagnostic or therapeutic procedures.

**MUT Antibody (Center) - Protein Information****Name** MMUT ([HGNC:7526](#))

**Function** Catalyzes the reversible isomerization of methylmalonyl-CoA (MMCoA) (generated from branched-chain amino acid metabolism and degradation of dietary odd chain fatty acids and cholesterol) to succinyl-CoA (3-carboxypropionyl-CoA), a key intermediate of the tricarboxylic acid cycle.

**Cellular Location**

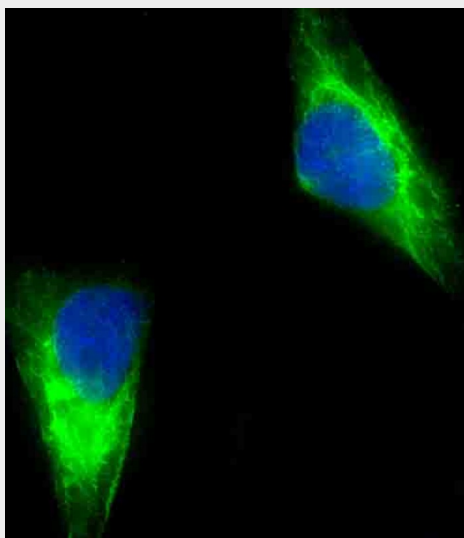
Mitochondrion matrix. Mitochondrion. Cytoplasm

**MUT Antibody (Center) - Protocols**

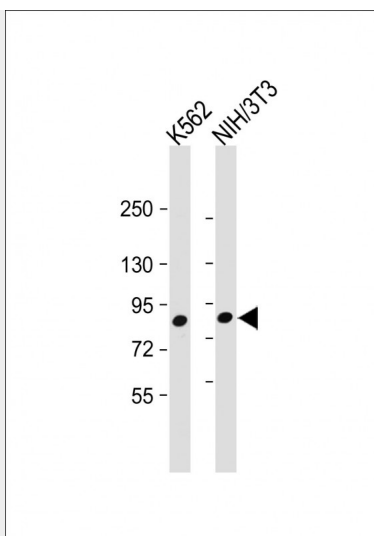
Provided below are standard protocols that you may find useful for product applications.

- [Western Blot](#)
- [Blocking Peptides](#)
- [Dot Blot](#)
- [Immunohistochemistry](#)
- [Immunofluorescence](#)
- [Immunoprecipitation](#)
- [Flow Cytometry](#)
- [Cell Culture](#)

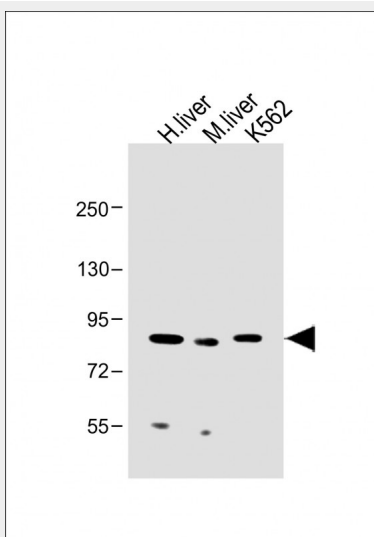
**MUT Antibody (Center) - Images**



Immunofluorescent analysis of 4% paraformaldehyde-fixed, 0.1% Triton X-100 permeabilized HeLa (human cervical epithelial adenocarcinoma cell line) cells labeling MUT with AP22355c at 1/25 dilution, followed by Dylight® 488-conjugated goat anti-rabbit IgG (1583138) secondary antibody at 1/200 dilution (green). Immunofluorescence image showing cytoplasm mainly and mitochondrion staining on HeLa cell line. Cytoplasmic actin is detected with Dylight® 554 Phalloidin (PD18466410) at 1/100 dilution (red). The nuclear counter stain is DAPI (blue).



All lanes : Anti-MUT Antibody (Center) at 1:2000 dilution Lane 1: K562 whole cell lysate Lane 2: NIH/3T3 whole cell lysate Lysates/proteins at 20 µg per lane. Secondary Goat Anti-Rabbit IgG, (H+L), Peroxidase conjugated at 1/10000 dilution. Predicted band size : 83 kDa Blocking/Dilution buffer: 5% NFDM/TBST.



All lanes : Anti-MUT Antibody (Center) at 1:2000 dilution Lane 1: Human liver lysate Lane 2: Mouse liver lysate Lane 3: K562 whole cell lysate Lysates/proteins at 20 µg per lane. Secondary Goat Anti-Rabbit IgG, (H+L), Peroxidase conjugated at 1/10000 dilution. Predicted band size : kDa Blocking/Dilution buffer: 5% NFDM/TBST.

### **MUT Antibody (Center) - Background**

Involved in the degradation of several amino acids, odd- chain fatty acids and cholesterol via propionyl-CoA to the tricarboxylic acid cycle. MCM has different functions in other species.

### **MUT Antibody (Center) - References**

- Jansen R.,et al.Genomics 4:198-205(1989).
- Nham S.U.,et al.Genomics 8:710-716(1990).
- Ota T.,et al.Nat. Genet. 36:40-45(2004).
- Kalnine N.,et al.Submitted (MAY-2003) to the EMBL/GenBank/DDBJ databases.
- Mungall A.J.,et al.Nature 425:805-811(2003).

